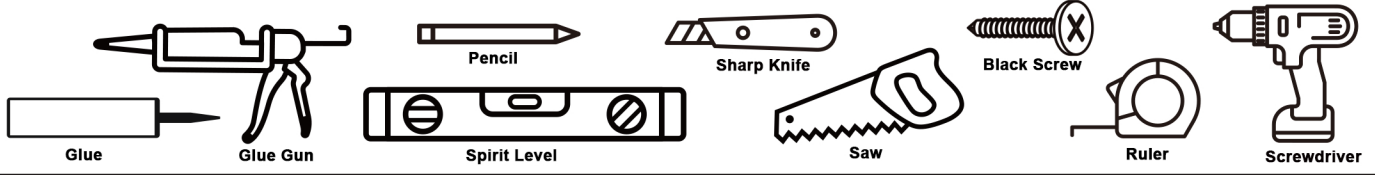


Manual

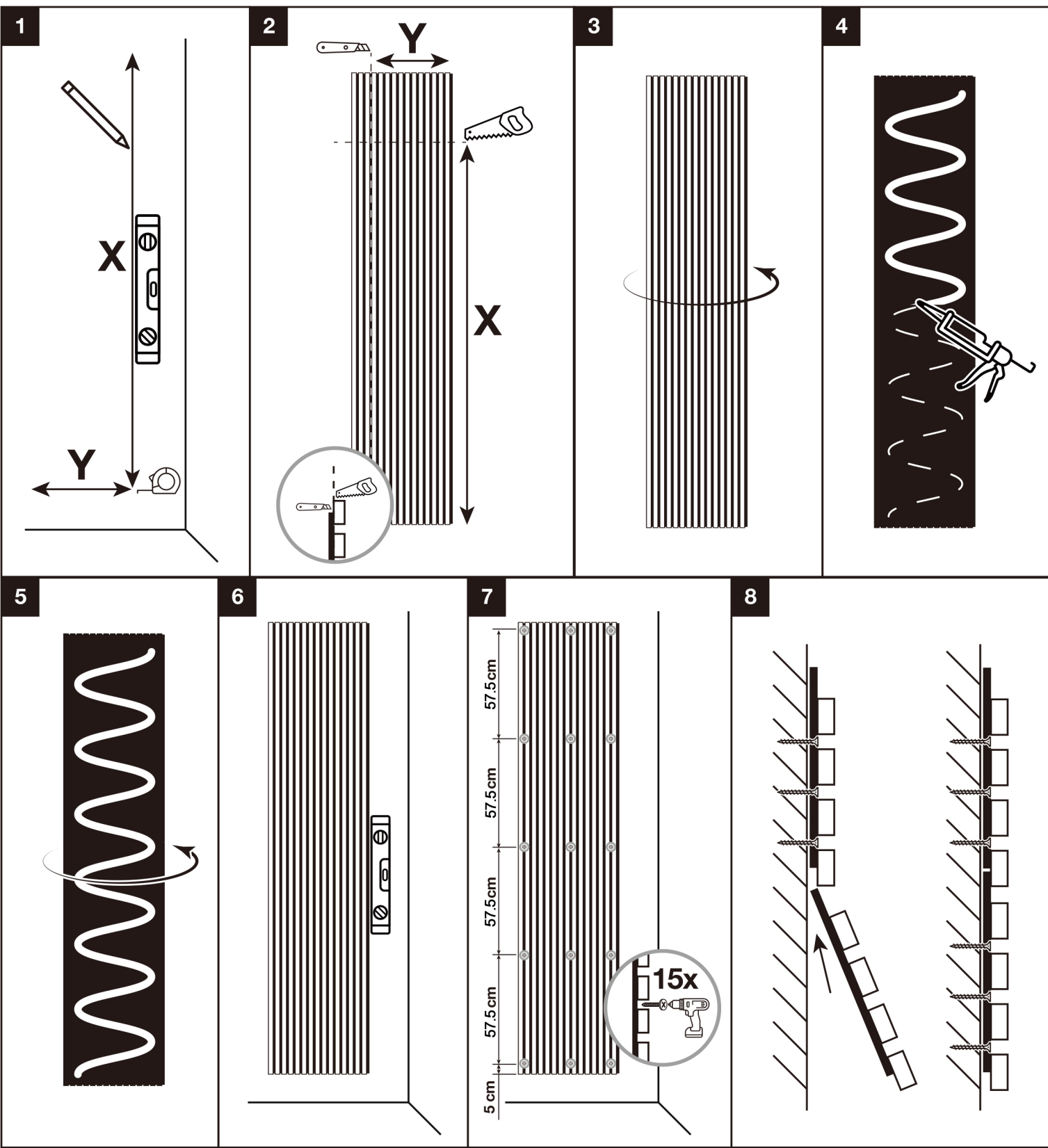
Wooden Slat Acoustic Panel

Method 1: NON-BATTEN MOUNTED
Direct fixing onto flat surface

ACCESSORIES & INSTALLATION TOOLS



INSTALLATION PROCESS: 2400*600*21MM

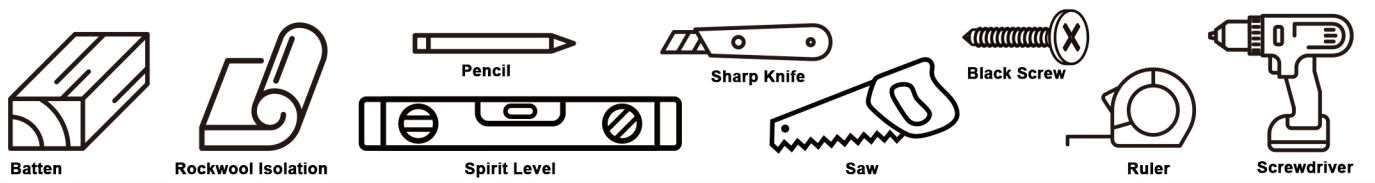


Manual

Wooden Slat Acoustic Panel

Method 2: BATTEN MOUNTED
Fixing to timber battens

ACCESSORIES & INSTALLATION TOOLS



INSTALLATION PROCESS: 2400*600*21MM

