

INSTALLATION OF RIGID COVING (SIMILAR FOR PANEL MOULDING, SKIRTING, BYBLOS, DOOR SURROUNDS)

1 SURFACE - CEILING - WALL



Dustfree

Dry

No grease

Flat wall
and ceilings

Sand and
wash surface



- Use DecoFix Pro for porous or DecoFix Hydro for non-porous surfaces
- Extra attention for gluing on wallpaper!!
- Preferably use DecoFix Hydro & DecoFix Extra for new-build projects
- Adhesion of paint or plaster on wall must be perfect
- When in doubt about surface, please contact Orac

2 WORKING CONDITIONS



Storage & installation
conditions for OracDecor
products & DecoFix

Place profiles & adhesives
at room temperature
24 hours before installation

ONLY FULL GUARANTEE WITH DECOFIX

3 GLUES

INTERIOR
POROUS AND
DRY SURFACE



ORAC LUXUS
ORAC AXENT
ORAC BASIXX



glueing on
wall and
ceiling



joints



For Orac Basixx use
DecoFix Pro for joints

EXTERIOR
NON-POROUS
HUMID SURFACE



ORAC LUXUS
ORAC AXENT






glueing on
wall and
ceiling



joints

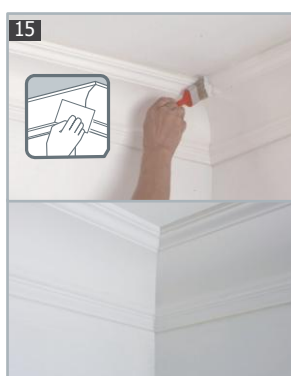
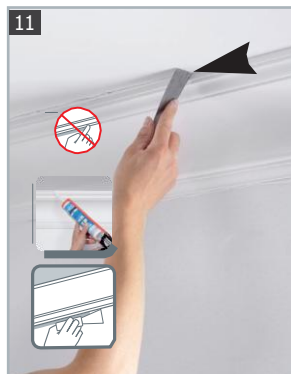
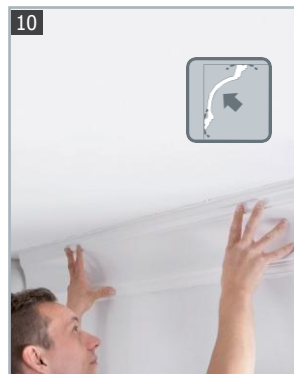
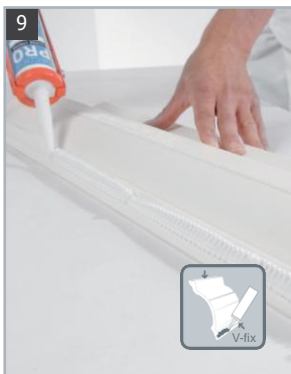
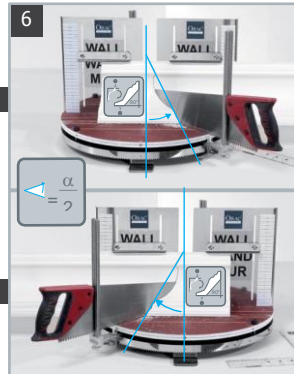
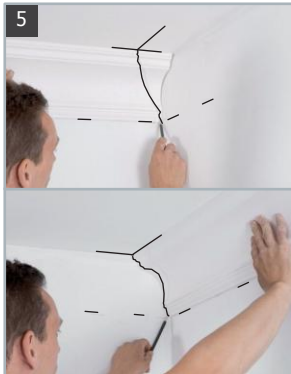


	<p>DecoFix Pro FDP500 310ml > 7 - 8m</p> <p>FDP600 4200ml > 65 - 110m</p>	<ul style="list-style-type: none"> • Strong, water-based acrylic glue • Long-lasting seal between mouldings and the wall and/or ceiling • For interior applications and porous surfaces (not for humid spaces or outside) • Remove with humid sponge or cloth • Should be kept frost free
	<p>DecoFix Extra FX200 310ml > min. 80m</p> <p>FX210 80ml > min. 20m</p>	<ul style="list-style-type: none"> • Polyurethane-based glue • Seam joints between the mouldings • Remove excess glue before hardening (max. 1 hour and repeat after 2-3 hours) • Clean with acetone or Synth Thinner • Can be painted after 24 hrs • The more humidity, the faster the drying time
	<p>DecoFix Hydro FDP700 290 ml > 7 - 8 m</p>	<ul style="list-style-type: none"> • Extra strong MS polymer glue • For exterior applications, damp environments, non-porous surfaces (tiles, glass, ...) • Remove with soap solution

4 INSTALLATION > see reverse

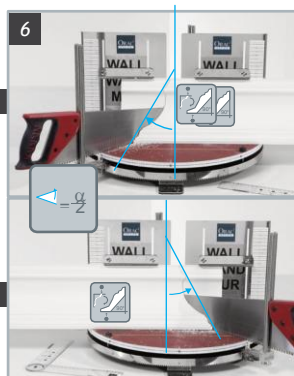
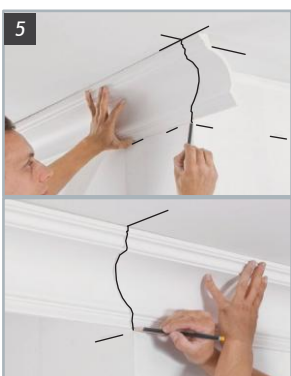
04 INSTALLATION RIGID COVING

INSIDE CORNER



- Joints have to be dust free
- Use DecoFix Hydro for exterior applications, humid areas, non-porous surfaces and for newly built houses with high humidity and low temperature
- DecoFix Pro or Hydro should be used over the complete length of the profiles and the full width of the gluing area
- The V-Fix is only for guiding the nozzle
- Push products firmly and evenly against the wall and ceiling (every 10 cm)
- Use stainless steel nails to support bigger profiles and indirect-lighting profiles
- Use DecoFix Extra in every joint (not only for corners) on one side of the profiles already installed
- Apply enough DecoFix Extra; excess must come out of the front and the back
- Wipe off with acetone or similar product

OUTSIDE CORNER



STOP MITRE

